

3130 130th St.
Belmond, Iowa 50421

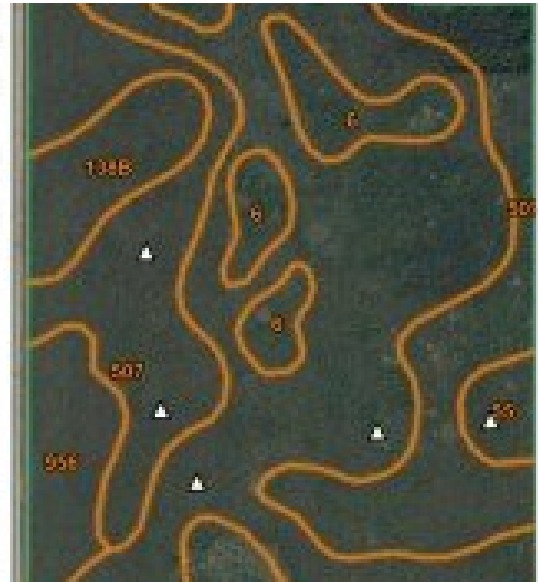
Jaspersen

INSURANCE & REAL ESTATE, LTD.

"The Little Shop With The Big Service"

Powered by **northerniowarealestate.com**

Acres	73 Acres M/L
CRP Contract	Terminates 10/1/25
Title present	Plugged for the duration of CRP Contract.
Possession	10-1-2025
N1/2 of NW NW; S 1/2 of NW NW; SW NW section 22-93-23, Pleasant Township, Wright County Iowa, except 2.96 acres (building site) located in NE corner of NW/NW	Legal description to be determined at the time of closing based on amended legal of original abstract.



\$825,000

73 acres M/L located in the N1/2 of NW NW; S1/2 of NW NW and SW NW section 22-93-23, Pleasant Township. CSR2 value of 72. Acreage/buildings have been surveyed off (2.96 Acres) and are not included in the sale of the farm land. They are available for sale and are listed for sale separately. Farm is currently enrolled in CRP with a contract termination of 10-1-25. Legal description of farm acres to be determined at close after the abstract is updated with the survey of the acreage area.



Tom Christianson

Phone: (515) 571-9480

Jaspersen Insurance & Real Estate Ltd.

Office: (641) 444-7163

For full listing details, please scan:

