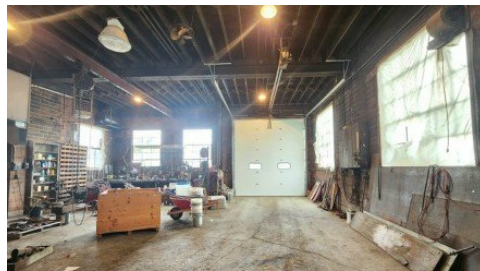
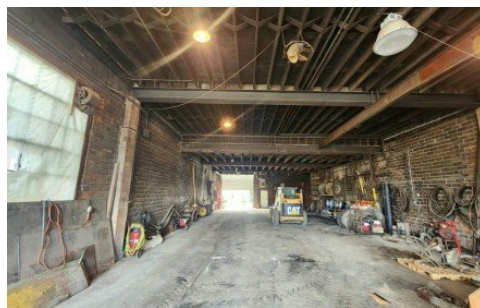


**708-712 S Jefferson**  
Mason City, IA 50401

**CENTURY 21**  
Preferred

Powered by **northerniowarealestate.com**

**MLS# 250611**



**\$485,000**

**8,520 Sqft**

TERRIFIC OPPORTUNITY! OVER 8,500 SQUARE FEET ON 2.17 ACRES! QUALITY BUILT, HEATED, OFFICE AND BATH IN 712 S JEFFERSON BLD! Updated over head doors on 2 of the buildings! Loading docks on 708 S Jefferson. Whether business equipment, RV etc. this property offers an abundance of space and versatility. Roof age approx. 2008? 708 S Jefferson month to month lease at \$700per month, yard month to month lease at \$525. Call today for further information or details!



**Dodie Wilkins**

Phone: (641) 425-9852

Century 21 Preferred

Office: (641) 424-9400

For full listing details, please scan:

