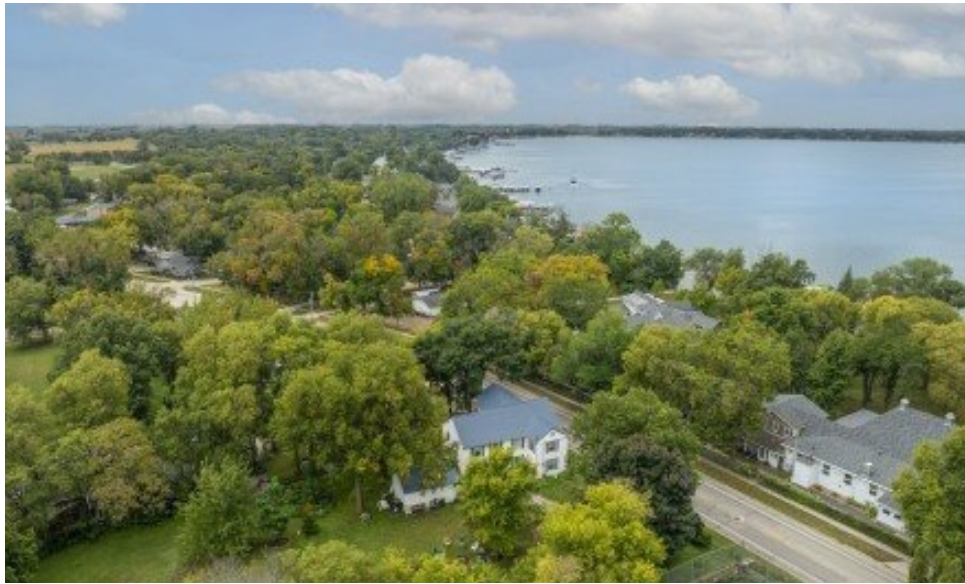


1100 S Shore Dr
Clear Lake, IA 50428

CENTURY 21
Preferred

Powered by **northerniowarealestate.com**

MLS# 250694



\$598,805

6 Bedrooms | 2.5 Bathrooms | 3,880 Sqft

TERRIFIC DEVELOPMENT OPPORTUNITY IN CLEAR LAKE! A PRIVATE RESIDENCE, INCOME GENERATING PROPERTY OR BOTH!! The Historic White House on the Hill, close to the Lake with .82 acres and alley access, explore the options available! Discover the charm and potential of this ONE OF A KIND property! Situated on a spacious lot, this historic home offers a unique blend of timeless character and modern opportunity! Whether you're dreaming of building your ideal home or preserving a piece of history, this property delivers! With the access and ample space, development possibilities are wide open, great potential in a desirable location! Charming historic home with abundant character and curb appeal, mature trees and open views! Convenient access for added flexibility! Additional opportunity to run a successful Airbnb with great potential for ongoing income, most furnishings included! Embrace the opportunity to create something truly special! Call today and make this rare find YOUR new DREAM HOME! :)



Dodie Wilkins

Phone: (641) 425-9852

Century 21 Preferred

Office: (641) 424-9400

For full listing details, please scan:

