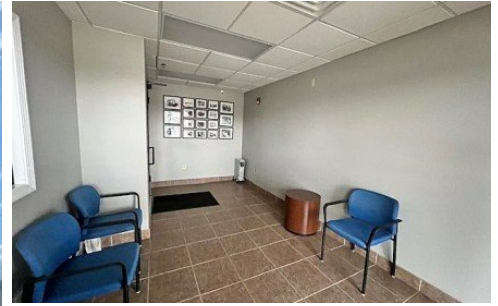


687 S Taft Ave, Suite 1
Mason City, IA 50401



Powered by northerniowarealestate.com

MLS# 260198



\$1

5,530 Sqft

Beautifully and designed commercial space in the Village Court Plaza, Suite 1. Excellent Commercial Lease Opportunity to open and grow your business in Mason City's successful Southwest location! Convenient access to all highways and to the Avenue of the Saints! 5,530 S/F of beautifully finished floor space with ability to design and build to your needs. This facility is complete with spacious rooms consisting of lobby, offices, conference / lunchroom area, storage, 3 bathrooms, open work areas, large shipping and receiving area, one loading dock with 2 overhead doors. Excellent centralized area for (General Office, Retail, Exercise, Specialty Services, Medical, Technical, Light Manufacturing, Government Offices). Great visibility, High Traffic Count frontage, Handicap accessible, Everything located on one floor with no steps. Ample parking spaces. Negotiable Build-out options. Beautifully landscaped and well maintained. Triple Net Lease - (Lease Rate 5,200 per month). Available May 1, 2026. Call Kathy Loeckle at 641-420-4286 or email at kjloeckle@gmail.com



Kathy Loeckle
Phone: (641) 420-4286
Exit Realty Mason City
Office: (641) 424-3005

For full listing details, please scan:

